

LEGEND

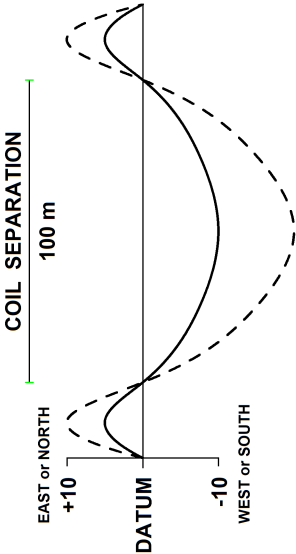
HORIZONTAL LOOP EM

STACKED IN PHASE

INSTRUMENT : APEX PARAMETRICS MAX-MIN I-10

PROFILE SCALE : 1 cm = 10%

- 220 IN PHASE : [Black line]
- 880 IN PHASE : [Blue line]
- 3520 IN PHASE : [Red line]
- 7040 IN PHASE : [Magenta line]



IN-PHASE DATUM : 0%

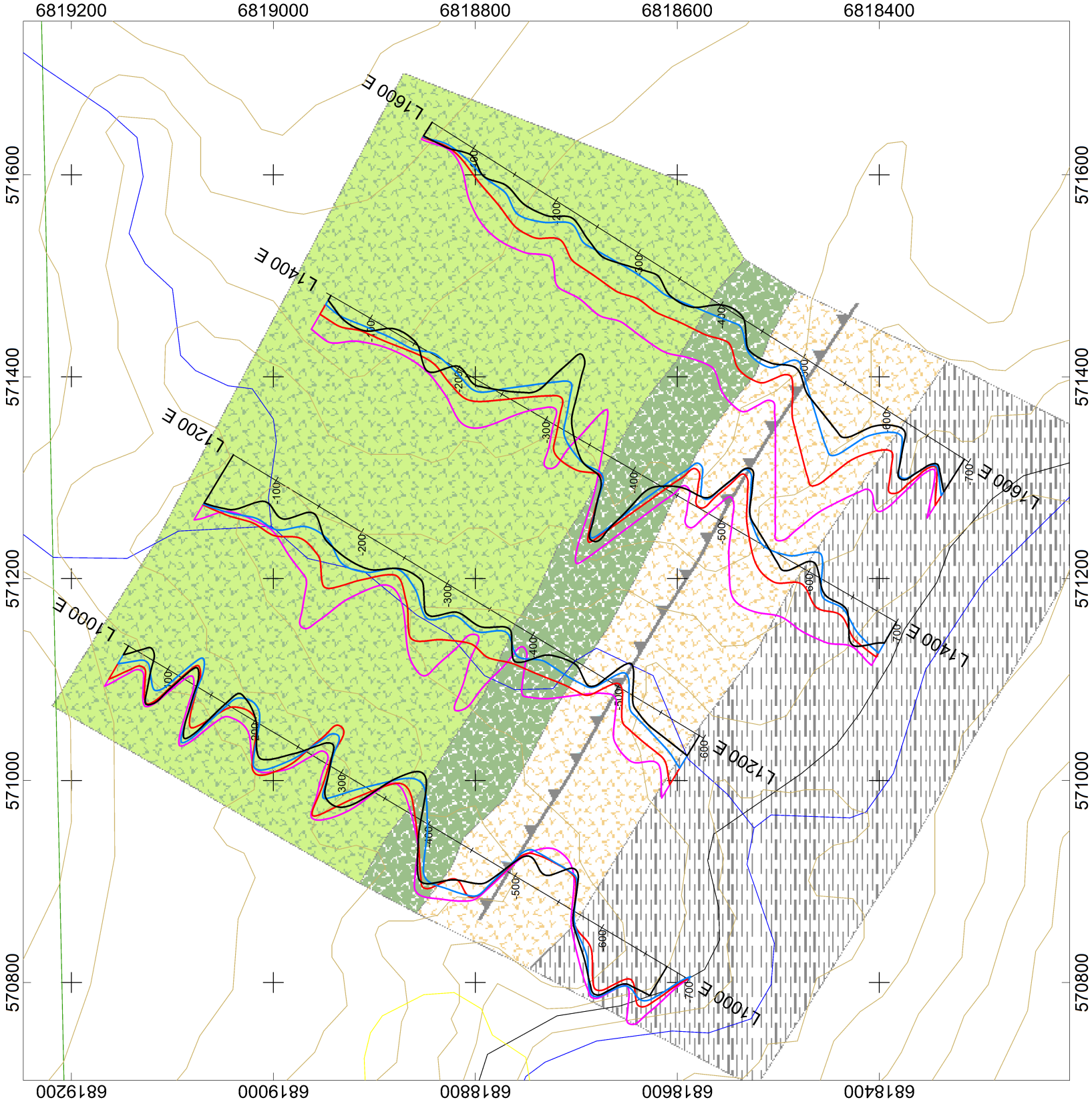
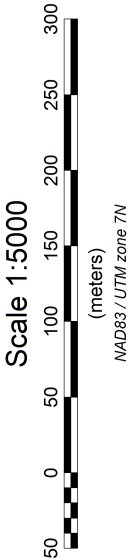
QUADRATURE DATUM : 0%

DATA FILE : MNM-13550-YT-HLEM.gdb

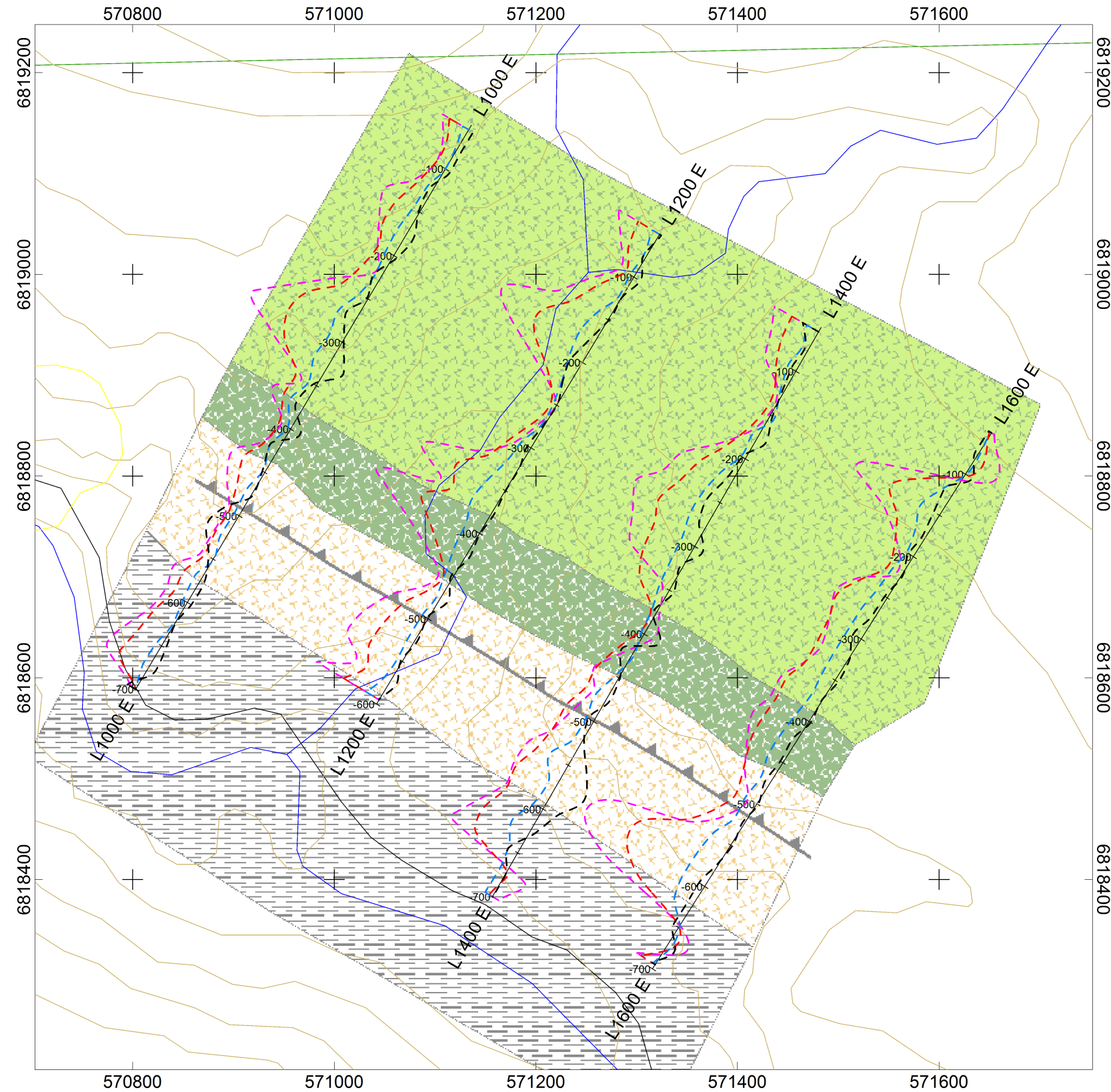
OPERATORS : PJ

STATION SEPARATION : 25m

LINE-KM SURVEYED THIS SHEET : 2.5 km



MIDNIGHT MINING SERVICES
DONJEK-ARCH PROJECT - TECK GRID HLEM STACKED IN-PHASE PROFILES
WHITEHORSE MINING DISTRICT, YUKON, CANADA NTS: 115G 05 DATE SURVEYED: AUGUST 2013 DATE / DRAWN BY: AUG 28, 2013 / PJ
AURORA GEOSCIENCES LTD







LEGEND

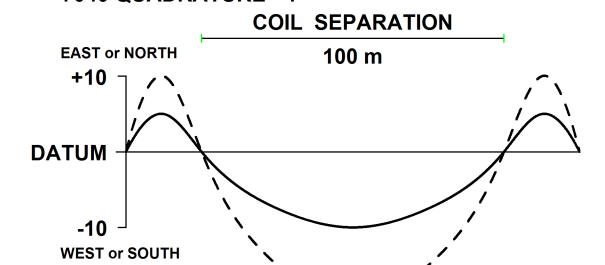
HORIZONTAL LOOP EM

STACKED QUADRATURE

INSTRUMENT : APEX PARAMETRICS MAX-MIN I-10

PROFILE SCALE : 1 cm = 10%

220 QUADRATURE : 
880 QUADRATURE : 
3520 QUADRATURE : 
7040 QUADRATURE : 



IN-PHASE DATUM : 0%

QUADRATURE DATUM : 0%

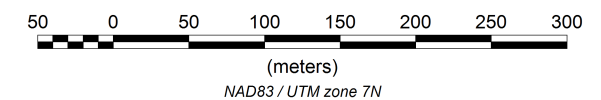
DATA FILE : MNM-13550-YT-HLEM.gdb

OPERATORS : PJ

STATION SEPARATION : 25m

LINE-KM SURVEYED THIS SHEET : 2.5 km

Scale 1:5000



MIDNIGHT MINING SERVICES

**DONJEK-ARCH PROJECT - TECK GRID
HLEM STACKED QUADRATURE PROFILES**

WHITEHORSE MINING DISTRICT, YUKON, CANADA
NTS: 115G 05

DATE SURVEYED: AUGUST 2013
DATE / DRAWN BY: AUG 28, 2013 / PJ

AURORA GEOSCIENCES LTD